



Optimised Leak Testing with the Modules of **Leak Test Panels Series 300**

Competitive Basic Modules for all Leak Test Applications
Extendable to multi-channel Leak Test Systems
with PC Control

Typical Applications with Series 300 Panel

Simple Application: Manual Leak Test of Medical Parts

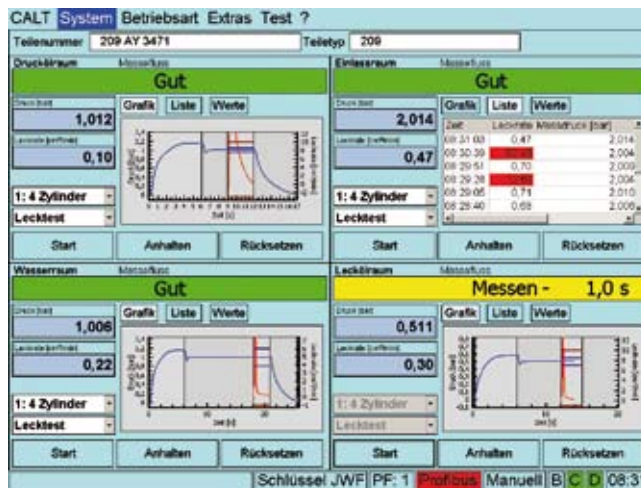
The part is leak tested in a manually operated sealing fixture. The MPS 300 module works as a fully functional leak test panel.



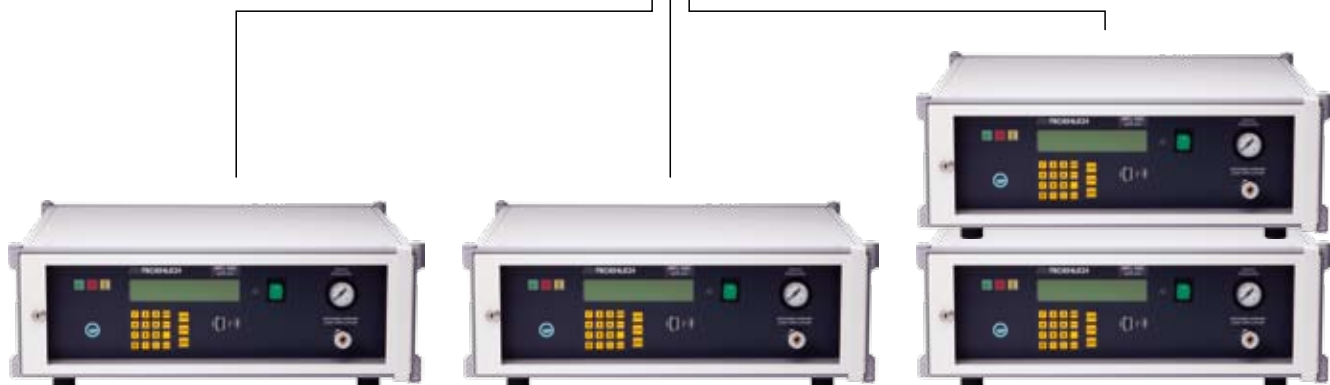
Complex Application: Automatic Leak Test of Cylinder Heads

Leak testing water jacket, oil gallery and plugs. Four leak test operations are performed with: 1 x MFL300 Mass-Flow for the water jacket, 3 x MPS300 Pressure Decay for oil gallery and plugs.

The four Series 300 leak test panels are linked to a separate PC (In this application the MMI of the PLC). This enables the graphic results to be displayed and the test results can be transmitted to data networks.



Separate PC for displaying results



MFL300: Leak test water jacket

MPS300: Leak test oil gallery

MPS300: Leak test plugs

Panel Versions

	Test circuit	Pressure ranges ⁽¹⁾ [bar] (relative)	Typical ranges of limit leak rates [cm ³ /min]	Specific Characteristics
MPS 300	Pressure decay Standard	-0,9; 2; 5; 7; 10	0,5 to 100 cm ³ /min	Universal usability, high leak rate resolution
MPS 350	Pressure decay High Resolution	-0,9; 2; 5; 7; 10; 16; 20; 35	0,1 to 50 cm ³ /min	Very high leak rate resolution
MFL 300	Mass flow Standard	7	0,5 to 1000 cm ³ /min	Very high leak rate resolution at shortest test time
MFL 360	Mass flow High Range	1,8; 3,5	50 to 5000 cm ³ /min (max. 200 L/min.)	High leak rate ranges

⁽¹⁾ other pressure ranges on request

Technical Data (valid for all panel versions)

Operating system	Linux
No. of test-channels	1 resp. up to 12 ⁽²⁾
Display	4 x 40 char LCD resp. 15" TFT ⁽²⁾
Dimensions in mm	195 x 540 x 500 (H x B x T)
Statistical evaluation of the test results: based on the last 500 resp. 100.000 tests ⁽²⁾	
Graphical display of measure values ⁽²⁾	
Maintenance views	

⁽²⁾With optional extension by a Windows PC

Optional Extensions

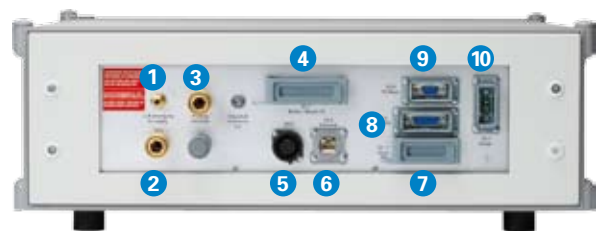
Profibus

Temperature compensation

Power supply (110/220 VAC to 24 VDC)

AutoParameterModule ⁽²⁾

⁽²⁾ Bei optionaler Erweiterung um einen Windows PC



Panel connections

- 1 Test air supply
- 2 VEX Volume (with MFL300)
- 3 Test part connection
- 4 Binary I/O signals
- 5 VEX valve control (with MFL300)
- 6 Network connection to Windows PC
- 7 Profibus (optional)
- 8 Connection to external pneumatic
- 9 Connector for temperature probes (optional)
- 10 24V DC power supply

JWF Leak Test Panel Family



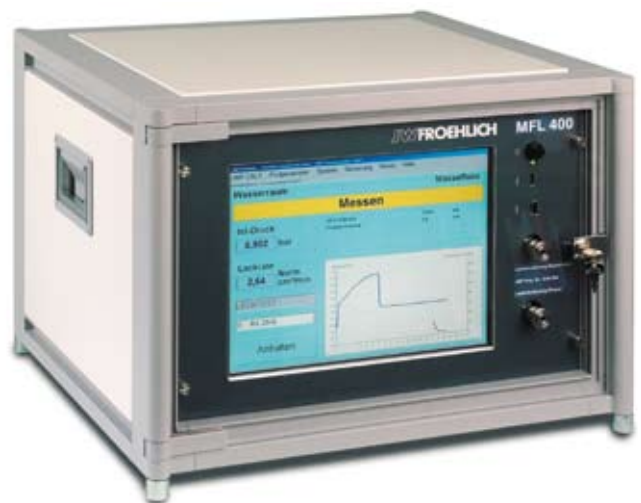
Series 100



Series 200



Series 300



Series 400

JWFROEHLICH

**JWFroehlich
Maschinenfabrik GmbH**

Kohlhammerstraße 18–24
70771 Leinfelden-Echterdingen
Telefon +49(0)711/797 66-0
Telefax +49(0)711/797 66-809

Fabrikstraße 34
73207 Plochingen
Telefon +49(0)7153/7012-17
Telefax +49(0)7153/7012-18

Laindon Essex England
Detroit Michigan USA
Shanghai + Dalian China
www.jwf.com